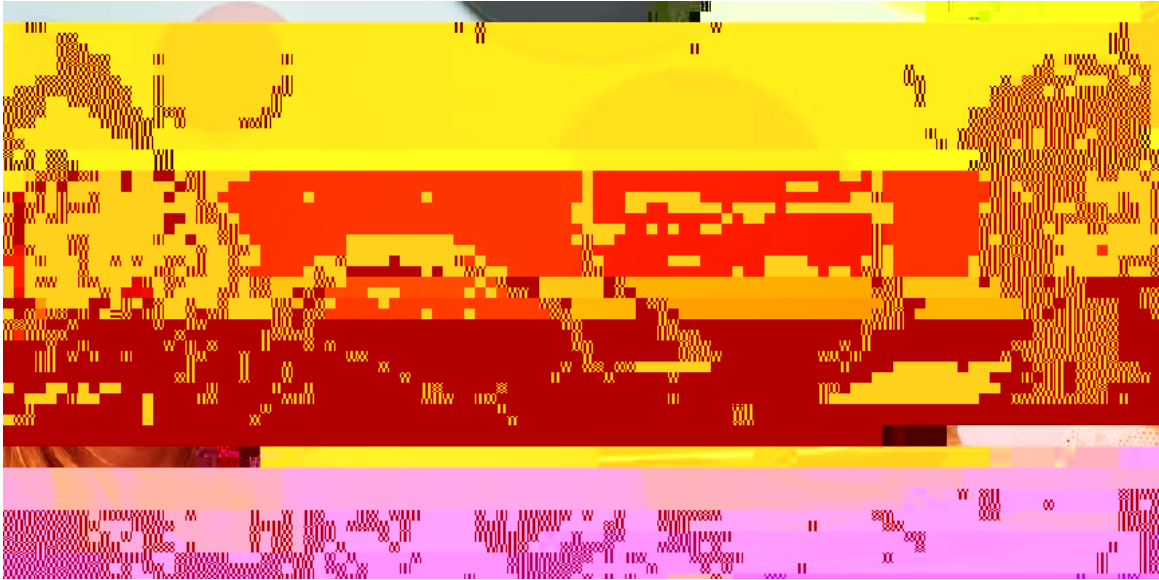


Portland Public Schools

PROHIBITS harassment and bullying on or adjacent to school grounds, to or from school, at any school-sponsored activity, or on school-provided transportation.



What is considered harassment and bullying?

- Threatening
- Insulting
- Demeaning
- Intentionally excluding a certain student or group of students
- Damaging a student's property
- Physically harming a student
- Causing a student reasonable fear of physical or social/emotional harm or property damage
- Inciting or creating a hostile educational environment

If you have witnessed or experienced harassment or bullying, please talk to a trusted adult at your school